

CLCP-PE 1.2

Avaliação Fonológica da Criança Crosslinguistic Child Phonology Project – Português Europeu

**Ana Margarida Ramalho, Maria João Freitas, Letícia Almeida
2014**

Coordenação: May Bernhardt & Joseph Stemberger

Ilustrações: Brígida Machado

Registo IGAC: 67/2014

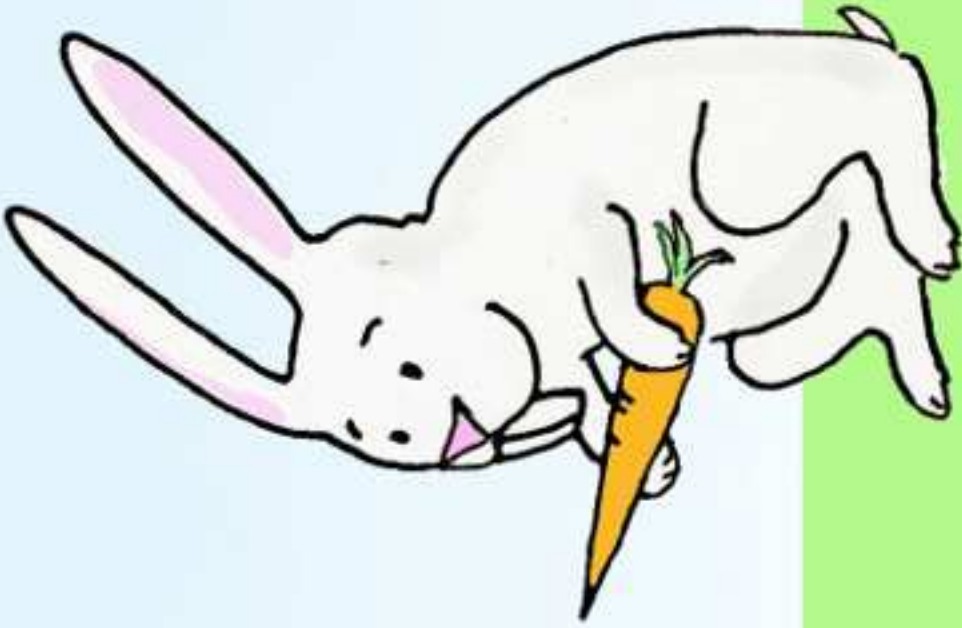
Investigação desenvolvida no CLUL, parcialmente financiada pelos programas da Fundação para a Ciência e Tecnologia PEst-OE/LIN/UI0214/2013 e UID/LIN/00214/2013, pela Bolsa de Doutoramento FCT SFRH / BD / 88966 / 2012 e pelo Social Sciences and Humanities Research Council of Canada 410-2009-0348



FCT

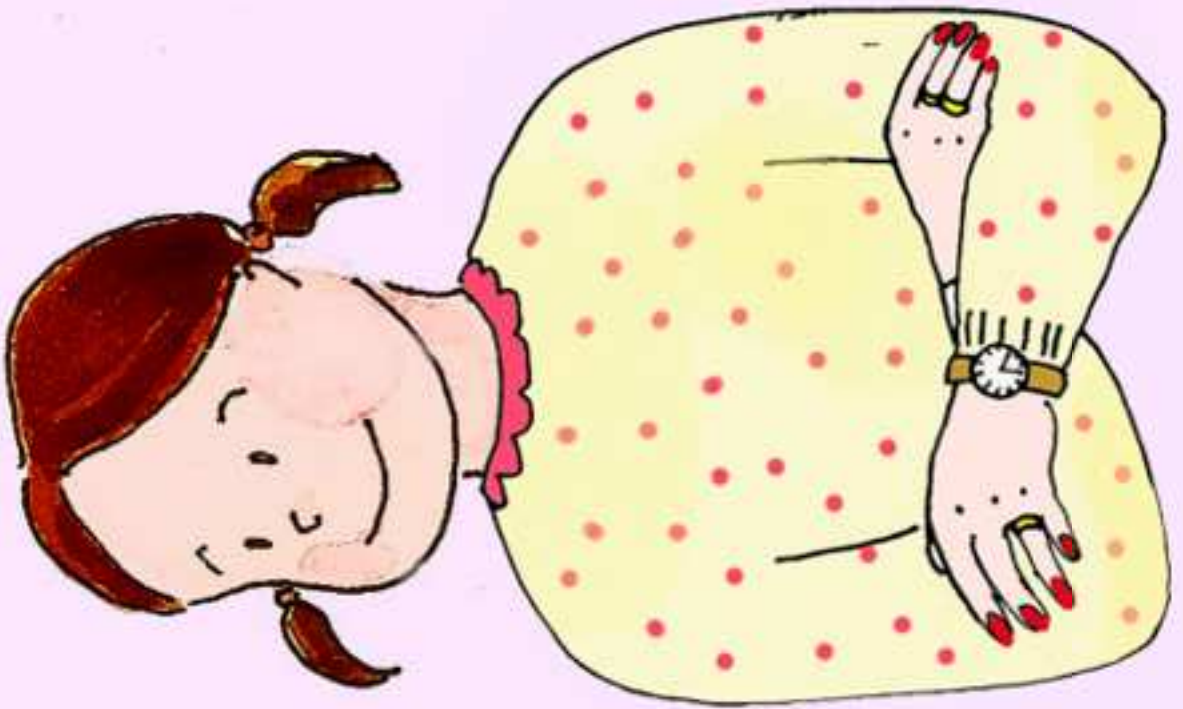
Fundação para a Ciência e a Tecnologia





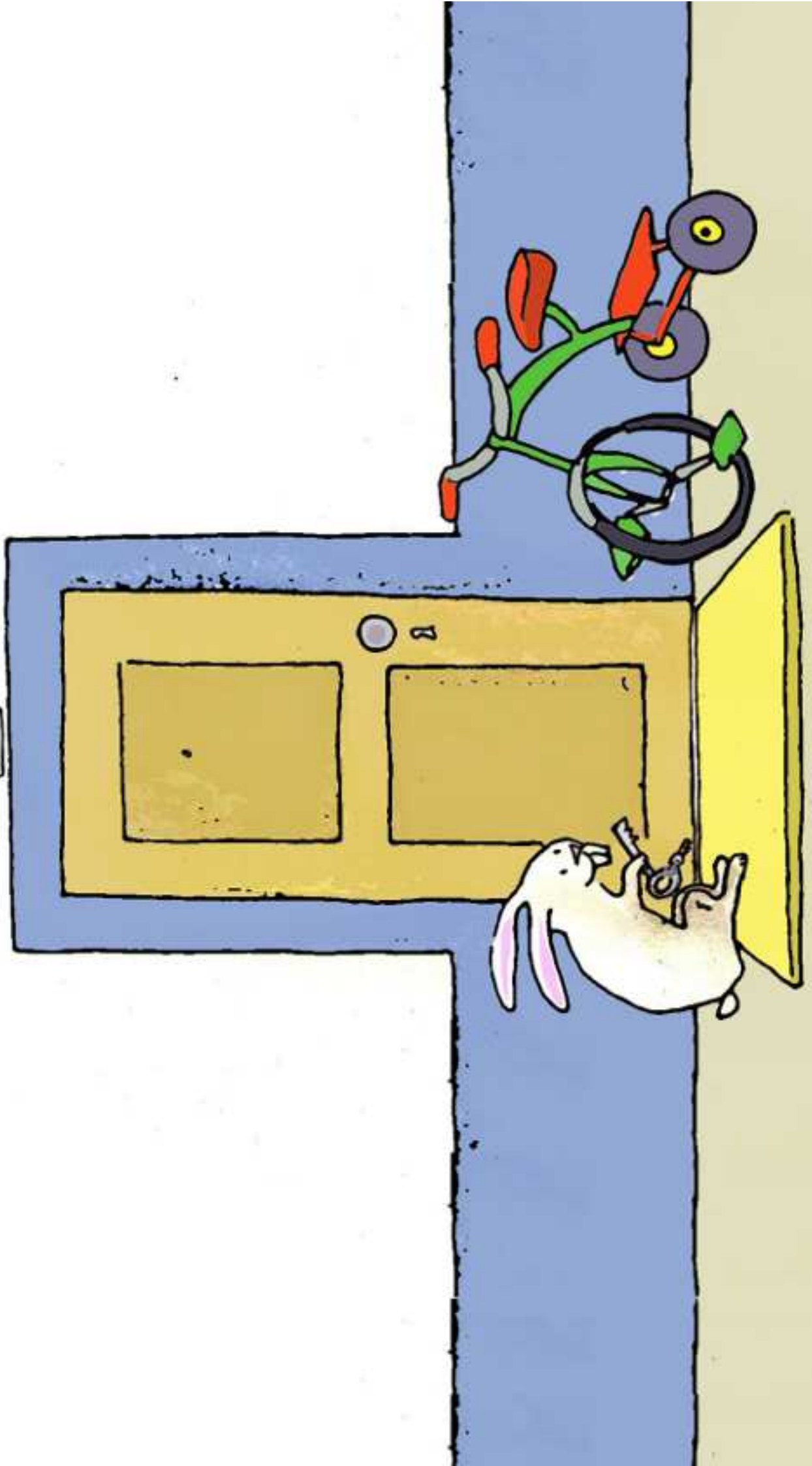






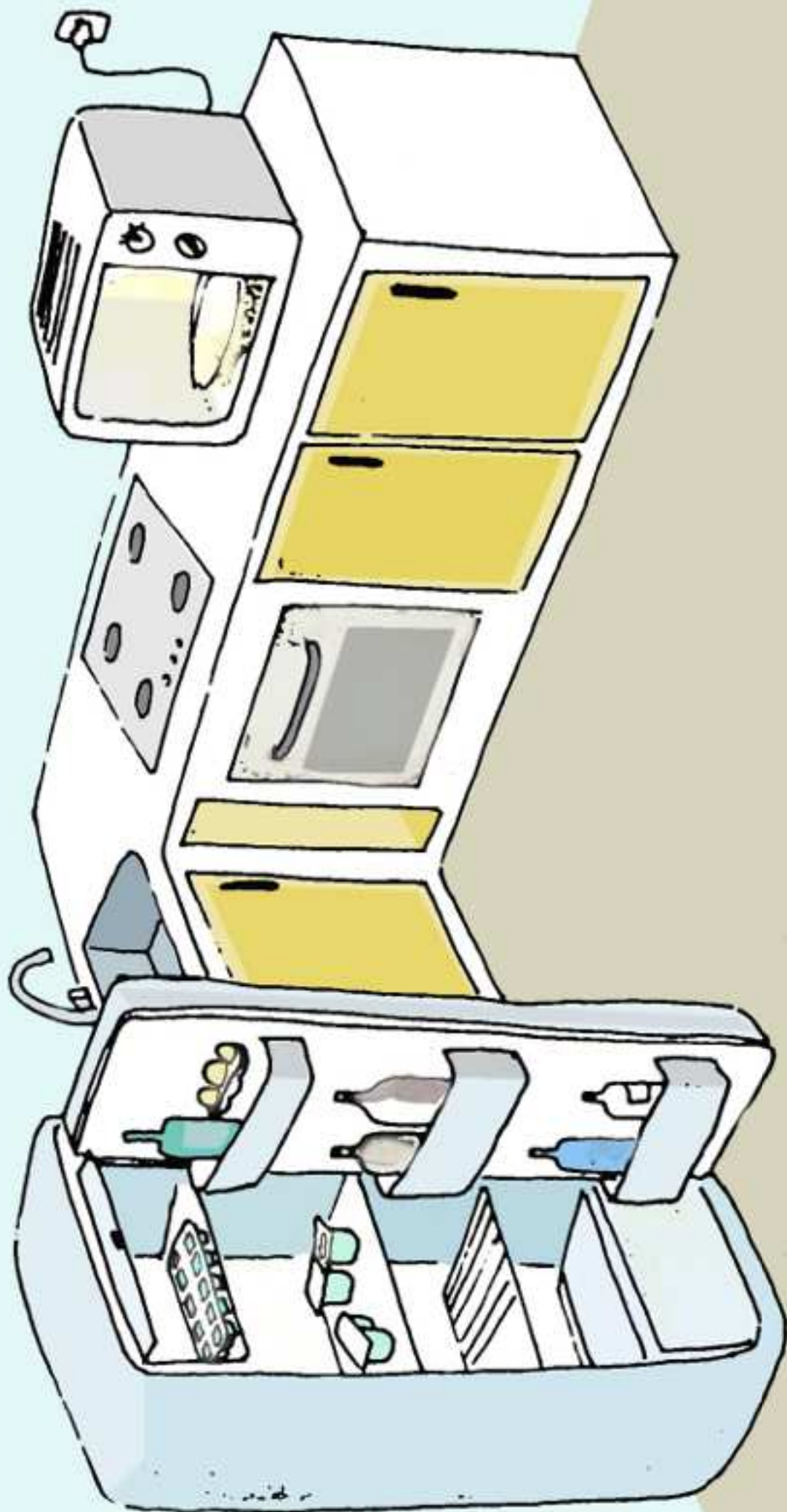


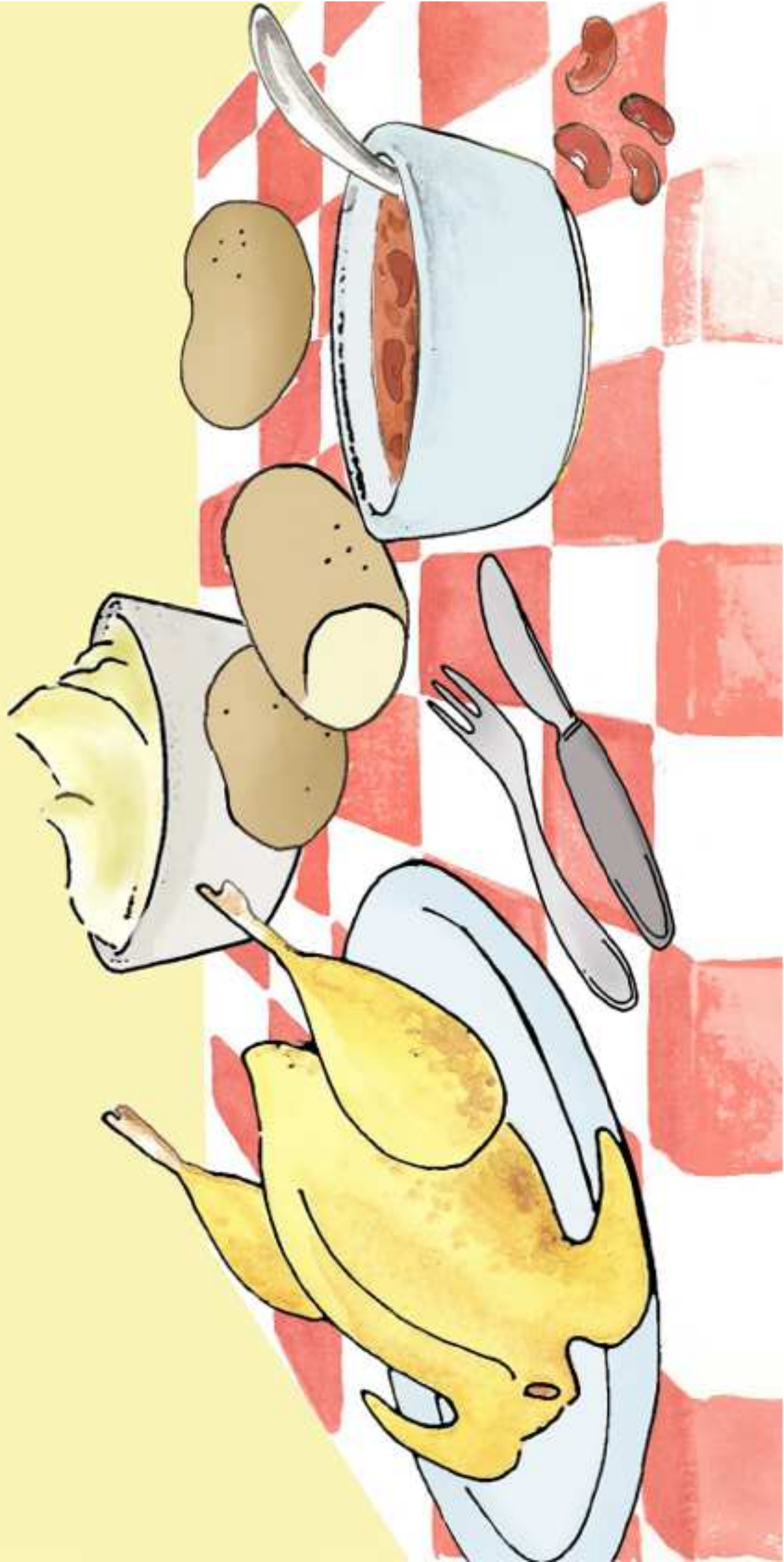
2

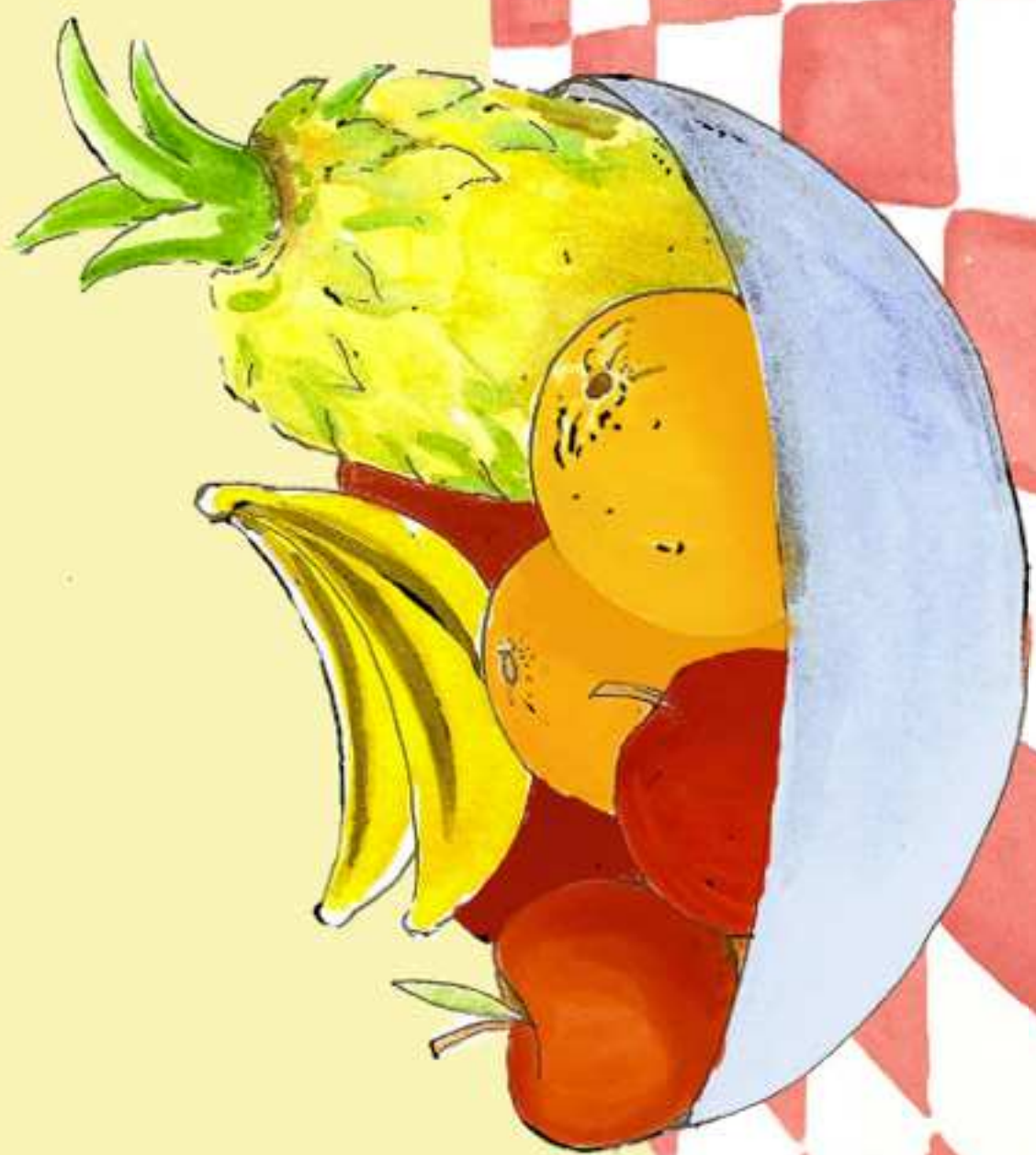










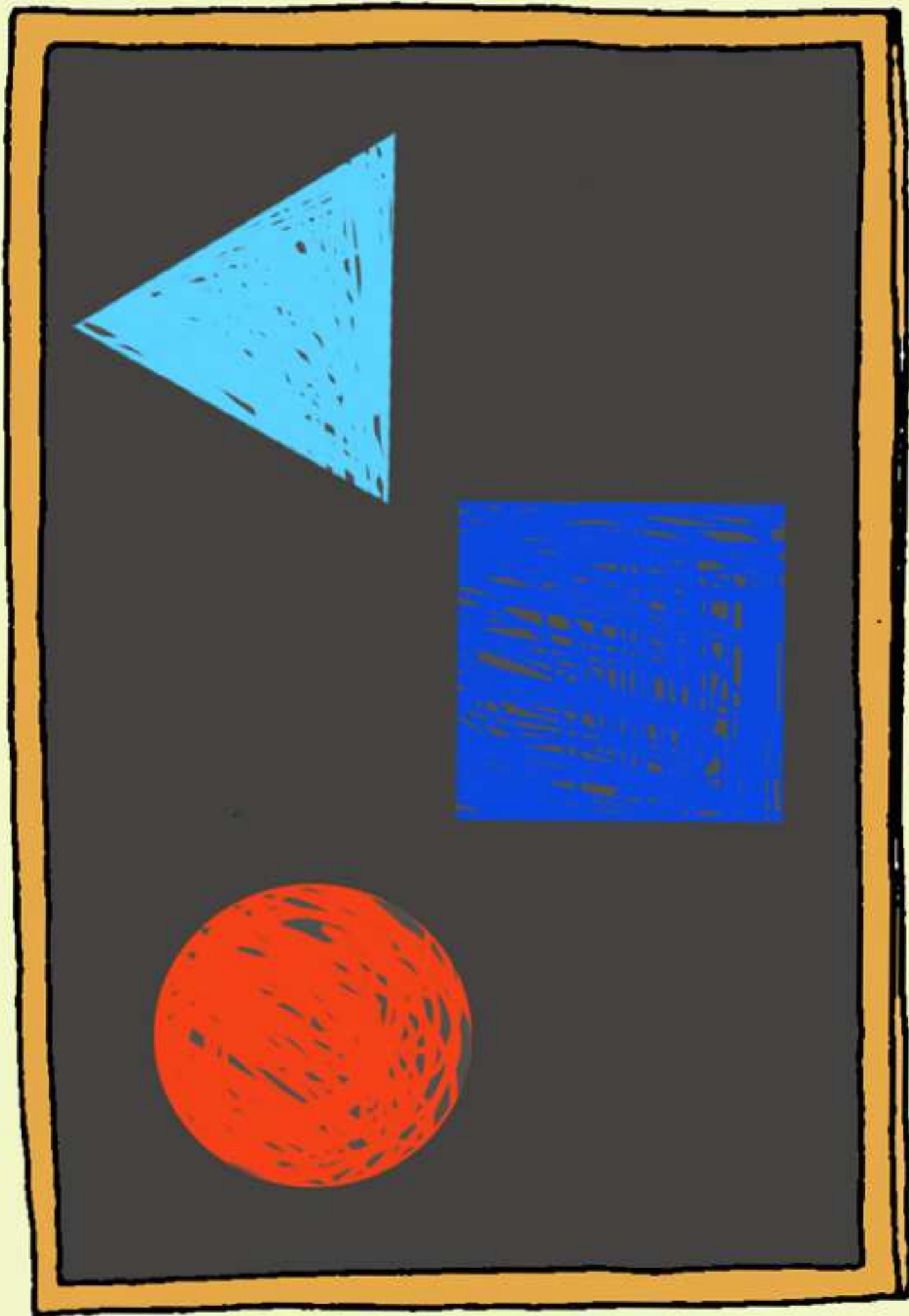












0 1 2 3 4 5 6 7 8 9 10

i i i i l e

d

n

g

meminor

m

h

memina

trai mãe

caso



